

# State of Wyoming Corner Record

(In compliance with the *CORNER PERPETUATION AND FILING ACT*, Wyoming Statutes, 1997 Section 33-29-140 et. seq., and the Rules and Regulations of the Board of Professional Engineers and Professional Land Surveyors)

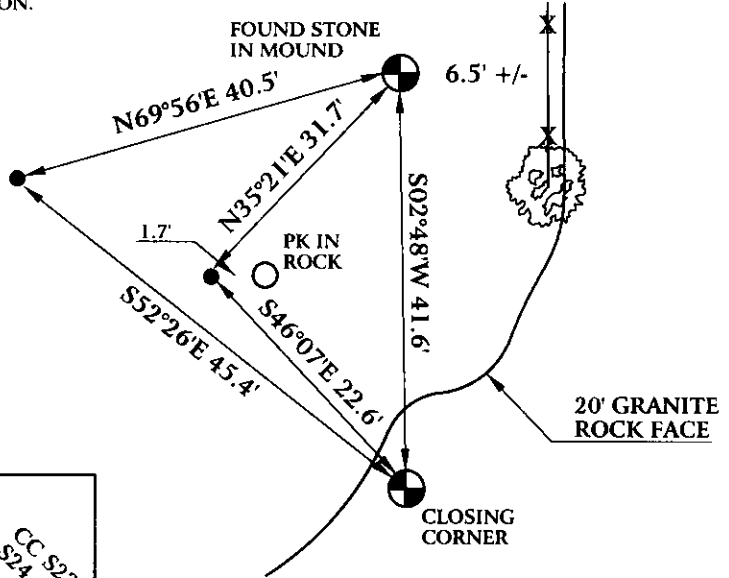
Reverse side of this form may be used if more space is needed.

Record of original survey and citation of source of historical information (if corner is lost or obliterated). Description of corner monumentation evidence found and/or monument and accessories established to perpetuate the location of this corner. Sketch of relative location of monument, accessories, and reference points with course and distance to adjacent corner(s) (if determined in this survey). Method and rationale for reestablishment of lost or obliterated corner.

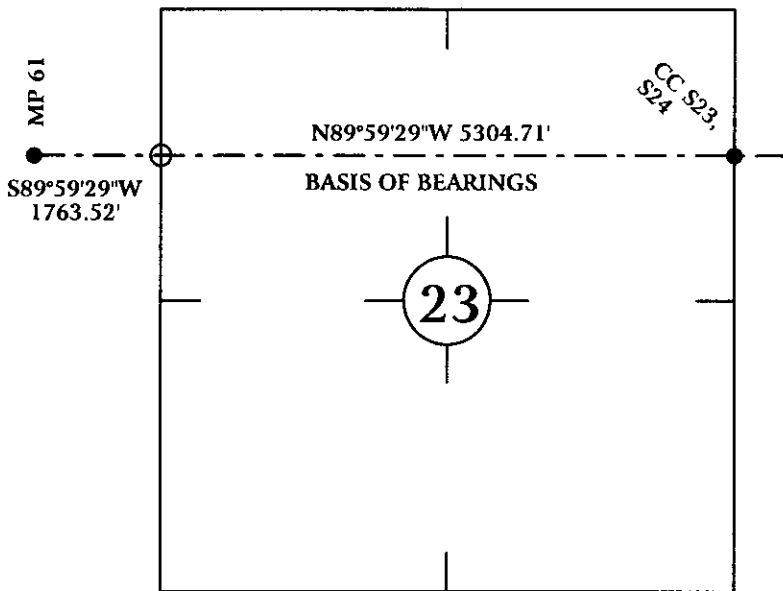
ORIGINAL CALL FOR 20" X 20" X 6" GRANITE STONE IN MOUND OF STONE MARKED TWO NOTCHES ON THE EAST, FOUR NOTCHES ON THE WEST, AND CC ON THE SOUTH.

FOUND 14" X 12" X 7" PINK GRANITE STONE IN MOUND OF STONES WITH ILLEGIBLE MARKINGS. MONUMENT FALLS ON TOP OF ROCK SHELF AND IS BELIEVED TO HAVE BEEN SET AS A WITNESS TO THE TRUE CORNER.

HELD STONE FOR LINE AND SET 3/4" X 30" REBAR WITH 3 1/4" ALUMINUM CAP. P.L.S. 6099 AT THE INTERSECTION OF SECTION LINE AND STATE LINE. THIS CORNER FALLS AT THE BASE OF A 20 FOOT HIGH ROCK OUTCROP IN THE BOTTOM OF HAYGOOD CANYON.

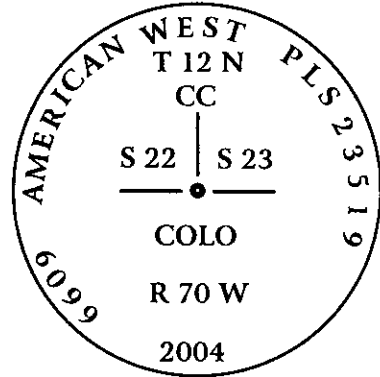


## Monument location



## Monument Inscription

3 1/4" ALUMINUM CAP ON  
3/4" X 30" REBAR



Date of Field Work: 10/8/04

Office Reference: AW04-8634

## Cross Index Plat

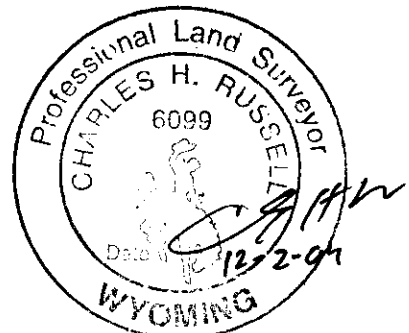
1	2	3	4	5	6	7	8	9	10	11	12	13	14	15	16	17	18	19	20	21	22	23	24	25	
A																									A
B																									B
C		6	5	4	3	2	1																		C
D																									D
E																									E
F																									F
G		7	8	9	10	11	12																		G
H																									H
I																									I
J																									J
K																									K
L		18	17	16	15	14	13																		L
M																									M
N																									N
P		19	20	21	22	23	24																		P
Q																									Q
R																									R
S																									S
T		30	29	28	27	26	25																		T
U																									U
V																									V
W																									W
X		31	32	33	34	35	36																		X
Y																									Y
Z																									Z

Firm/Agency, Address  
CHARLES H. RUSSELL P.L.S. 6099  
AMERICAN WEST LAND SURVEYING CO.  
29 SOUTH 4TH AVENUE  
BRIGHTON, CO 80601

This corner record was prepared  
by me or under my direction  
and supervision.

SEAL & SIGNATURE

Telephone Number:  
303-659-1532



RECORDED 2/17/2005 AT 1:52 PM REC# 409609 BK# 1865 PG# 149  
DEBRA K. LATHROP, CLERK OF LARAMIE COUNTY, WY PAGE 1 OF 1

Corner Name: Colo/Wyo Closing Corner, Sections 22 & 23, T 12 N, R 70 W, 6th P.M.

Cross-Index No.: O-17

County: Laramie Wyoming / Larimer Colorado